

# Rail Asset Management Summit 2018

# Rail Asset Management Summit

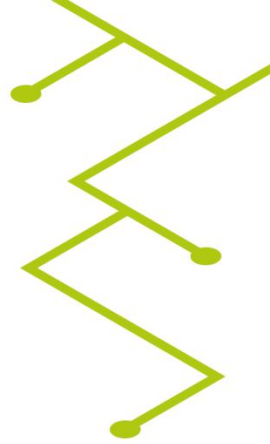
.....

## 2018

Matthew Justin  
Technical Director  
Asset Management Advisory  
WSP Ltd



# Moving from BIM to Asset Management



## Building Information Management

“**Process** of designing, constructing or operating a building or infrastructure **asset** using electronic **object-orientated information**”

PAS 1192-2:2013

**Processes:** Management Information

**Asset:** Building or infrastructure

**Object-OI:** Categories of object-orientated information system

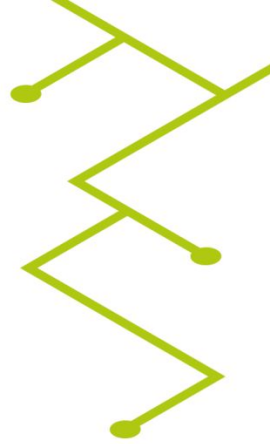
## Asset Management

“Coordinated **activity** of an **organisation** to realize **value** from assets”

ISO 55000:2014

**Asset:** Item, thing or entity that has potential or actual value to an organisation

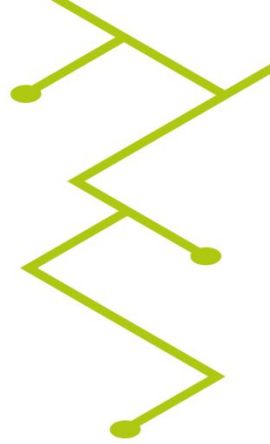
**Value:** Tangible or intangible, financial or non-financial



# Management System

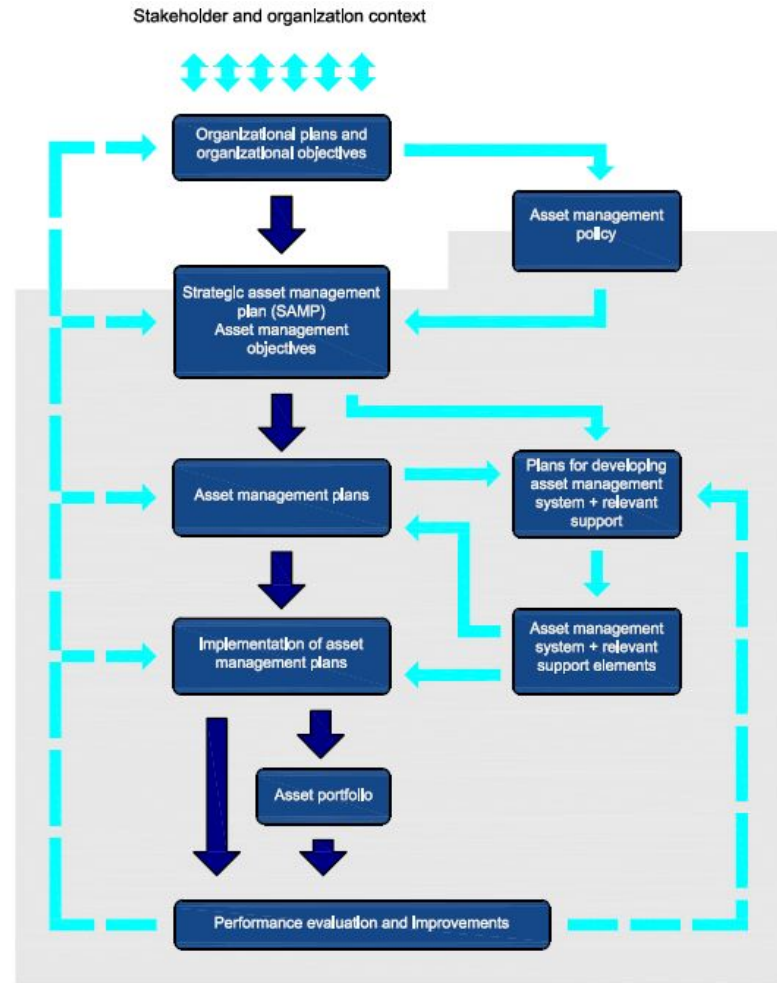
“Set of interrelated or interacting elements of an organisation to establish policies, objectives and processes to achieve those objectives”

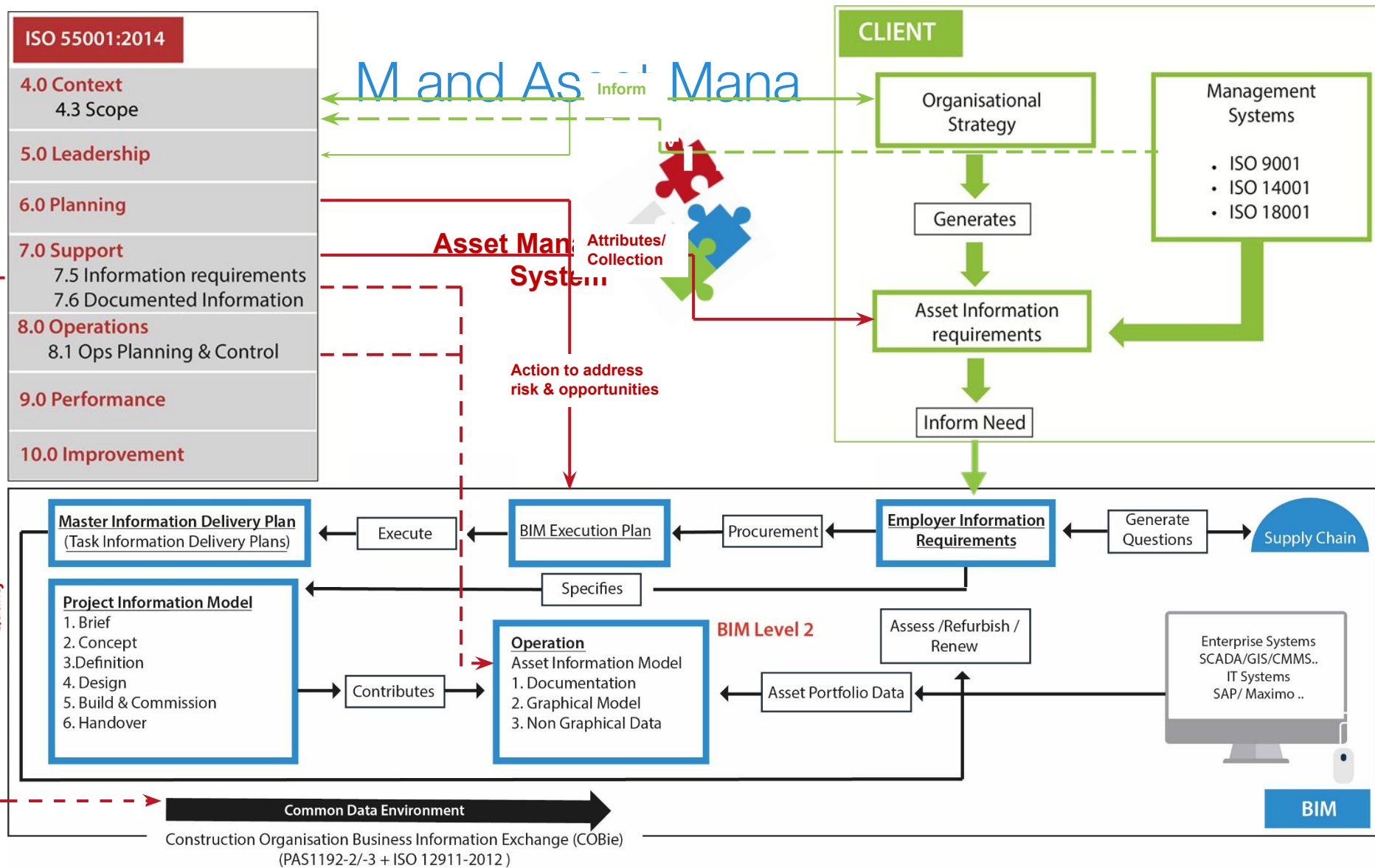
ISO 55000:2014

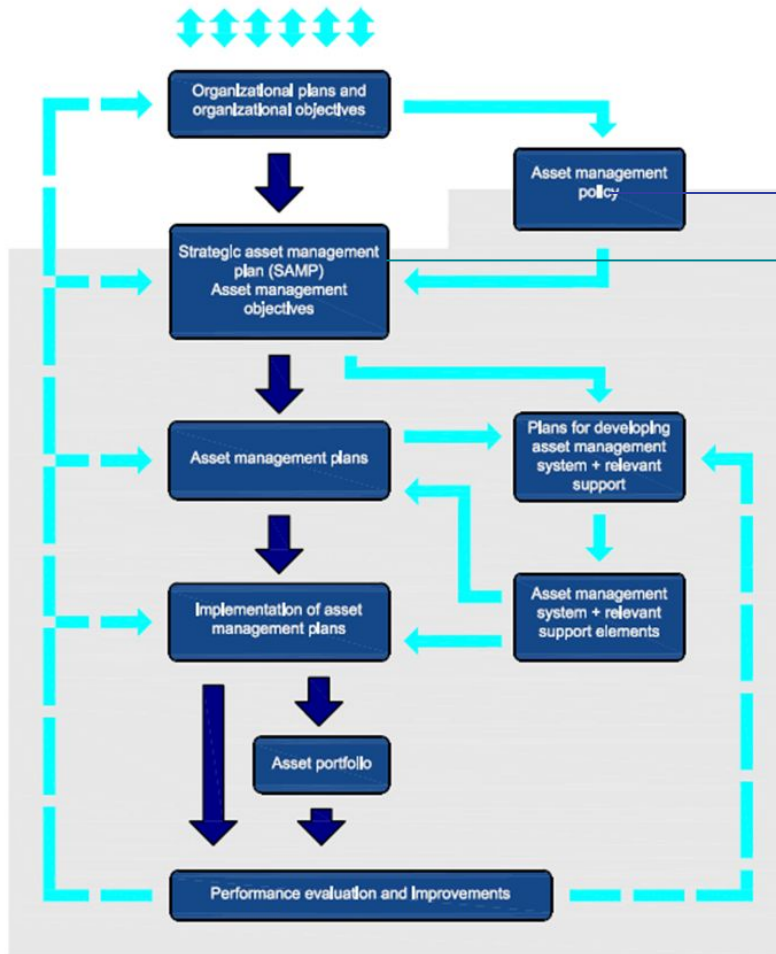


# Relationship between key elements of an asset management system

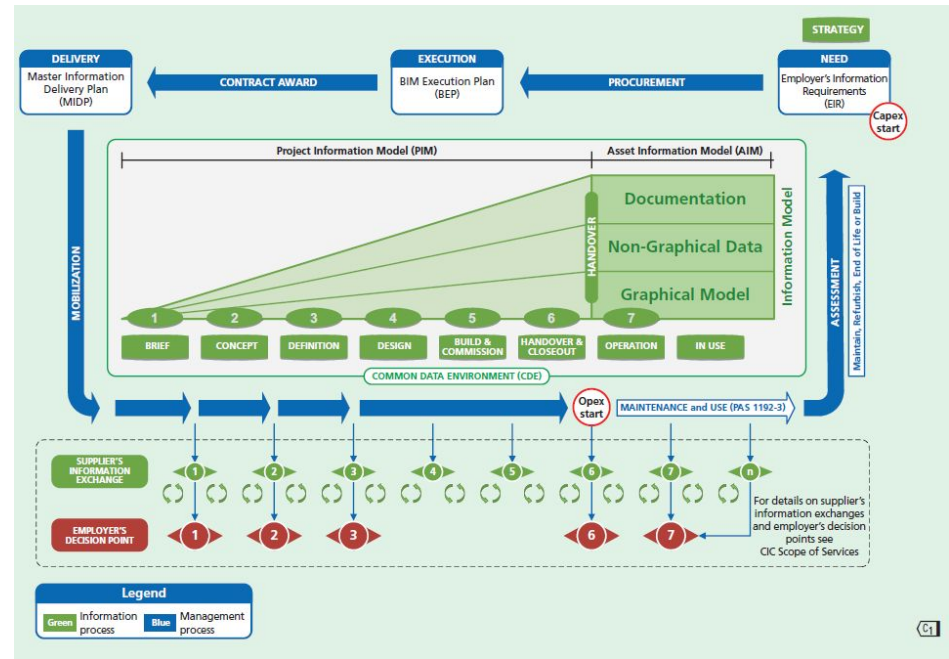
Source: ISO 55000-2014







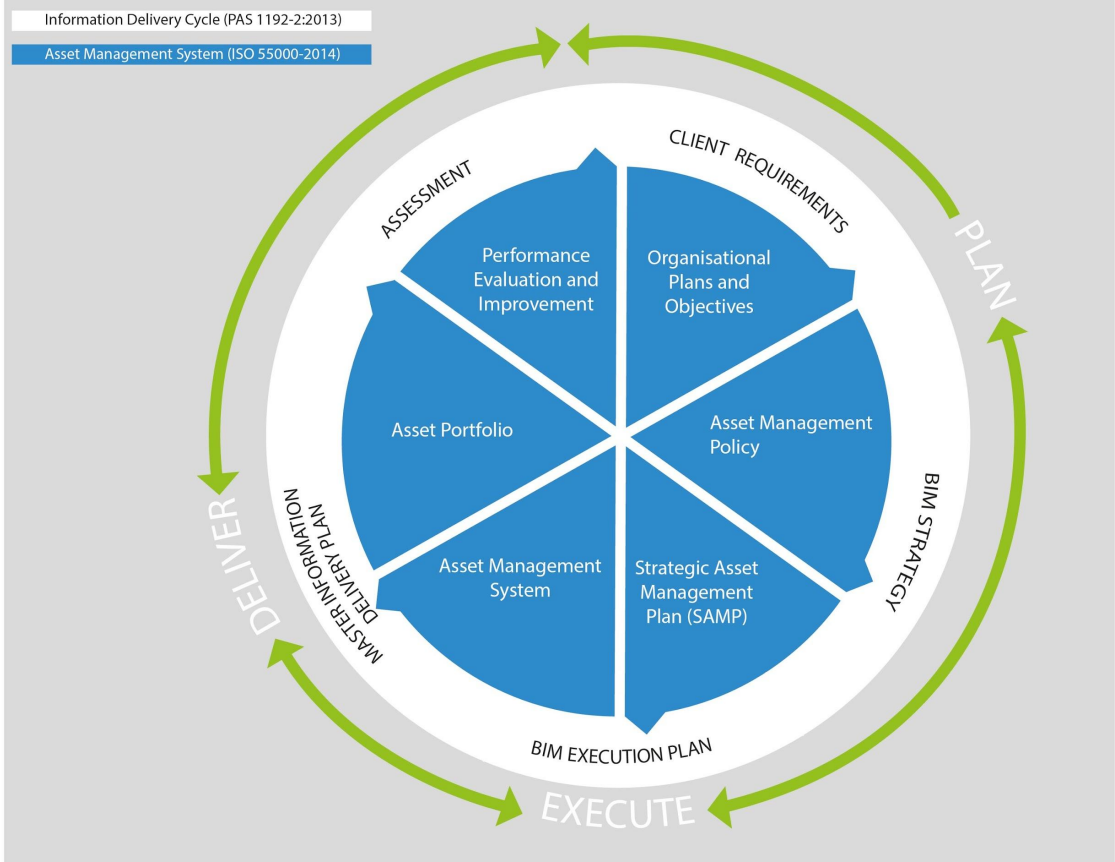
Relationship between key elements of an asset management system (ISO 55000-2014)



The Information delivery cycle (PAS 1192-2:2013)

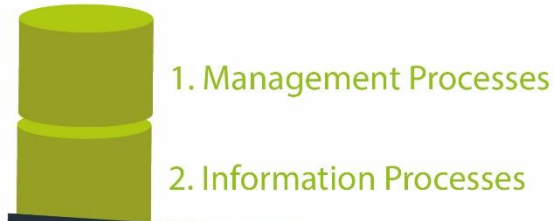


# An Integrated Approach to Obtain Asset Value

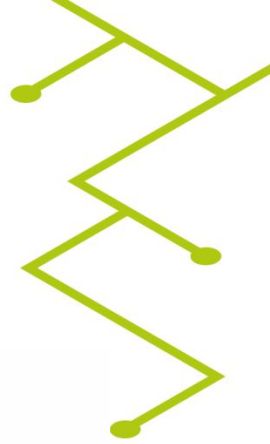
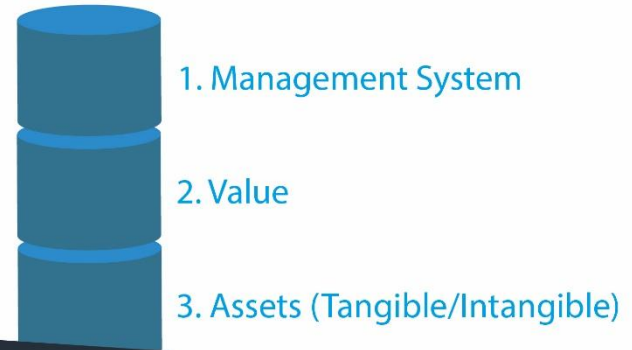


# An Optimised Approach

BUILDING INFORMATION  
MANAGEMENT



ASSET  
MANAGEMENT

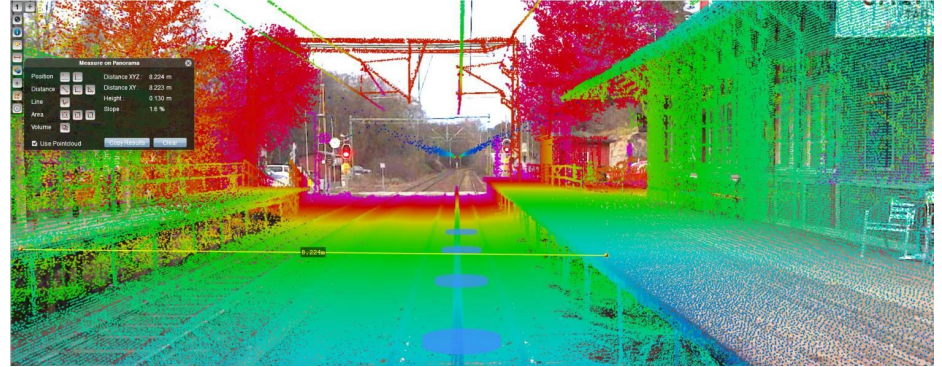


# Asset Data Management – Present and Future



## Singapore Land Transport Authority project

Condition assessment of RTS infrastructure using mobile technology



## Data collection using LiDAR

Data collection activity generating millions of data points to inform asset portfolio condition

## Embracing the Internet of Things

*Intel predict that by 2020 there will be 200 billion connected devices in the world.*